

Curved wall behind the stairs



Richard at the bottom



Bradley at the top



“J.C.” at the heat lamp



Upper wall is rounded



Sloped area at the roof rafters



Down to the main floor



Big time flooding overnight



Lighting wires dangling



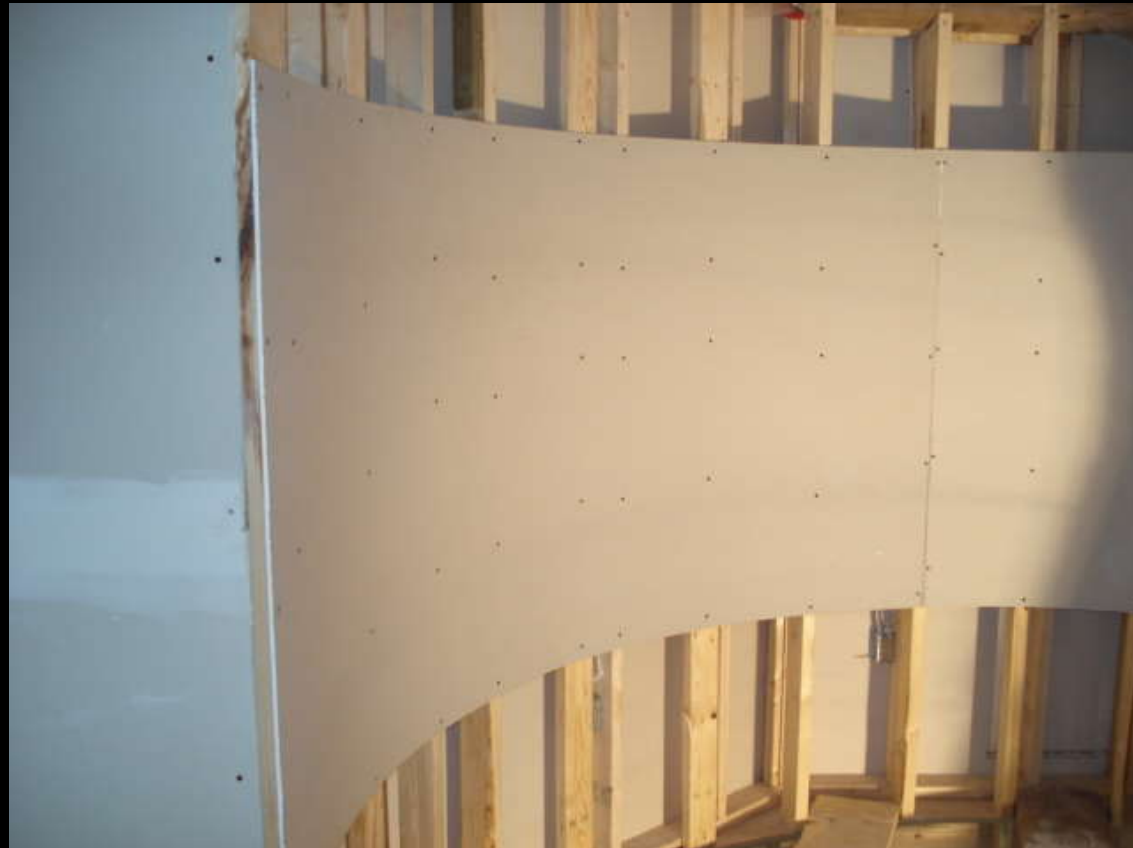
Flood waters cut the corner



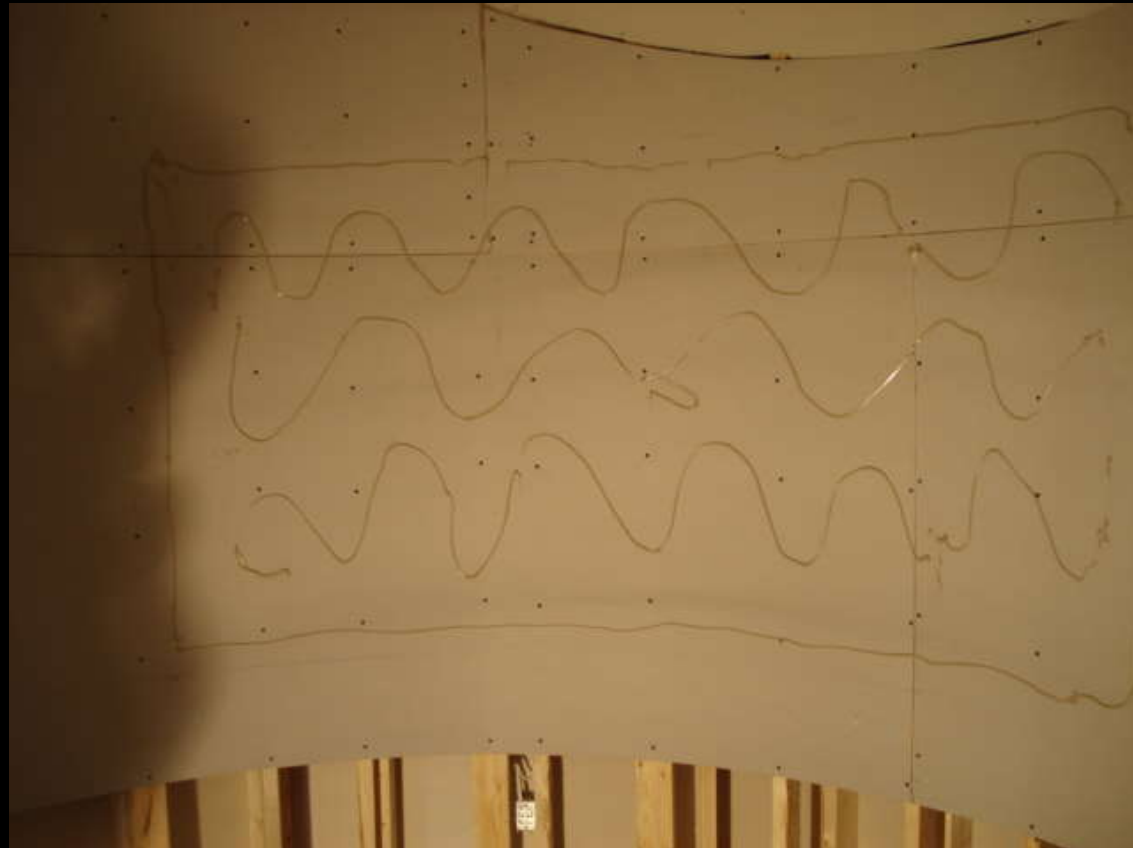
1/4" drywall round the curve



Second sheet meets the corner



Adhesive for the second layer



Hmmmmmm!



Second layer of drywall with staggered joints and offset vertically



Prepping the seams



The other corner



Supports for the “mud man”



Location of buried wire for future ceiling light in the dining room



Paul blowing insulation in the ceilings – R40



A blanket of insulation



More at this end



Scott Phillips testing for trim



Installing the 1843 crown molding



Original moldings repainted “Georgian Brick” & re-installed



North gable



Fitting the corner



“now this piece fits to this piece”



Heading to “The Farm” at sunrise



Caulking the casings



Crown under the front soffit



Front entrance



Ceiling in the living room



Sunlight on an 1843 floor



Steve's office



The dining room windows



Corner of the dining room



Living room ceiling complete



Can't get over the twist!



Kay's office



It'll be a bright small room



Family room is boarded



Brick wall of the old house



You can see the horizontal seam of the offset sheets



Left side, right side



Towards the master bedroom



Bedrooms on the south end



1860 window jambs & sill



The sewing room



The master bedroom



A pair of “belly” windows



View to the river



Another view of the river



Work station central



Prepping the dentil moldings



**I think we'll need 300 pieces – primed,
painted twice, installed and touched up!**



The first pieces of dentil molding



A little closer look



Do you remember the original?



A long way up



Around the corner – soffit lights



Lights to wash the front wall



We're going to combine corn!



It's awfully pretty!

